

# POWDURA® POWDER COATINGS

*Color Reference Guide*



For a Better Finish. Ask Sherwin-Williams.™

WE OFFER POWDER COATINGS...

**JUST IN TIME.**



The color experts at The Sherwin-Williams Company have designed this Powdura® Powder Coatings Color Selector with the latest industry color trends in mind. In fact, this color selector was designed for easy color selection based on both product finishing industry standards and market specific needs.

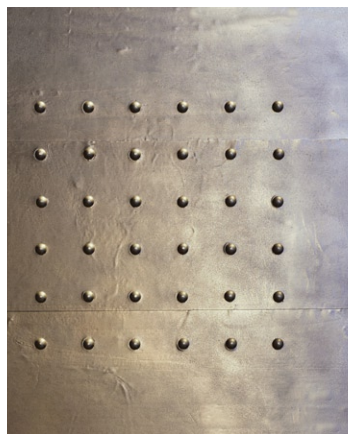
The following markets are emphasized:

- Heavy Equipment
- Electronic Enclosures
- Metal Building Products
- Metal Office Furniture



Product finishing industry standards available in Epoxy, Hybrid, Polyester and Urethane powder coating chemistries are also featured in this color selector. Additionally, functional powder coatings for applications requiring military or government specification are featured in this color selector.

With over 160 stocked colors to choose from and over 80 distribution locations across North America, your company's just-in-time supply chain needs will be satisfied.



# PROVEN PERFORMANCE



POWDURA® Powder Coatings are the right choice for today's advanced engineered products.

Selecting a coating that will meet the performance demands of various products while in their service environment can be challenging.



This color selector was designed to make this process easy.

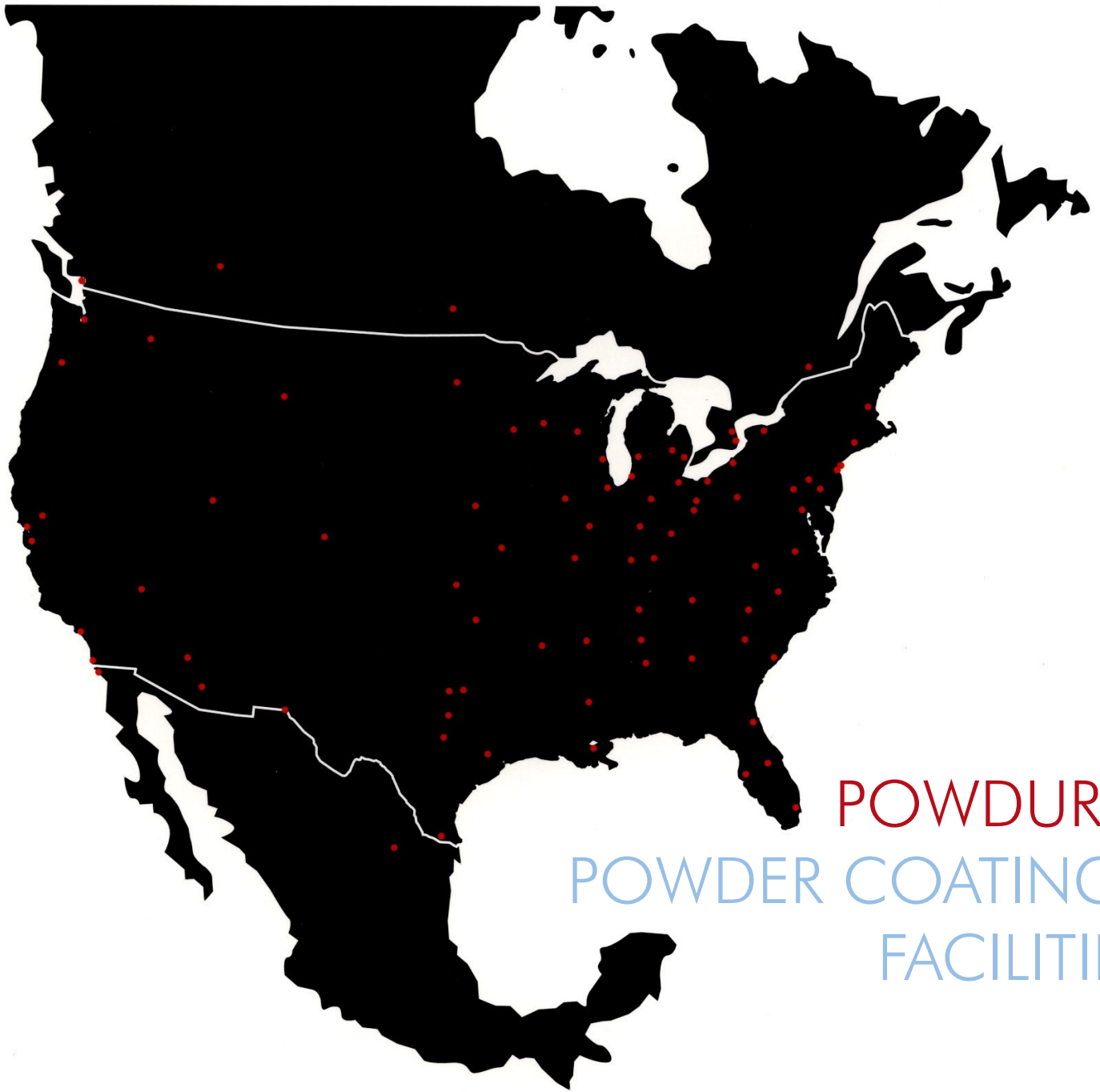


A wide assortment of in-stock colors and textures along with special effect finishes are available just in time.

Whether super durable, low-cure, out-gas free, thin film, or E-cap-free, Sherwin-Williams has the right solution to insure that your performance requirements are met.

These user-friendly technologies insure that your finishing line runs at peak efficiency allowing you to finish ahead of the competition.

PERFORMANCE CHARACTERISTICS				
	Epoxy	Hybrid	Polyurethane	Polyester
<b>Hardness</b>	Excellent	Very Good	Fair	Good
<b>Flexibility</b>	Excellent	Excellent	Excellent	Excellent
<b>Over-bake Stability</b>	Fair	Good	Very Good	Excellent
<b>Exterior Stability</b>	Poor	Poor	Excellent	Excellent
<b>Corrosion Protection</b>	Excellent	Very Good	Very Good	Very Good
<b>Chemical &amp; Solvent Resistance</b>	Excellent	Good	Good	Good
<b>Ease of Application</b>	Very Good	Excellent	Very Good	Very Good
<b>Low Temperature Cure</b>	Excellent	Very Good	Fair	Good



# POWDURA<sup>®</sup> POWDER COATINGS FACILITIES

The Sherwin-Williams Chemical Coatings Division, with more than 135 years of products finishing technology, serves the products finishing industry through a North American network of company-owned locations and with expanding global reach. The Sherwin-Williams Company's broad line of low-VOC coatings, full range of technical support and just-in-time distribution capabilities permits original equipment manufacturers to specify quality coatings with assurance of regulatory compliance. Visit our web site at [www.sherwin-williams.com/oem](http://www.sherwin-williams.com/oem) for the location of the Sherwin-Williams facility that can fulfill your powder coating needs.

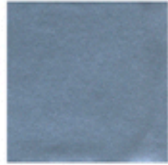


# POWDURA® POWDER COATINGS



For a Better Finish. Ask Sherwin-Williams.™

## Special Effects



Chrome Classic-Bonded  
UCF8-C0002 ●



Display Silver-Bonded  
HCF8-C0008



Silver Metallic  
PAM8-C0000 ★



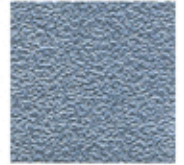
Sport Silver-Bonded ★  
PAF8-C0007



Chromal-Bonded  
UCF8-C0001 ●



Gunmetal  
HHF2-C0003



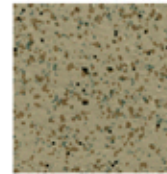
Blasted Steel  
FCF2-C0000 ★



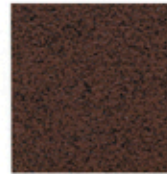
Pewter  
EBF8-C0002



Knapsack  
HHB2-C0018



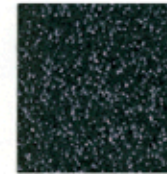
Desert Stone  
PHB2-C0015



Rust  
PRB2-C0001



Penny Vein-Bonded  
PBM8-C0001



Green Marble  
UGB8-C0000



Supreme Silver  
Vein-Bonded  
HBF8-C0001

- UCF8-C0002 (Chrome Classic), UCF8-C0001 (Chromal), and PAF8-C0008 (Chrome) require a clear coat at all times... such as, PCSB-C0009 Full Gloss Clear.

- ★ For exterior applications we recommend a clear top coat. (listed in the Functional section)

### Spice Powder Coatings

These multi-colored powders can be applied with single application. They are highly aesthetic, protective finishes that are intended for decorative metal finishing applications. These coatings are formulated and manufactured to meet all customer appearance and performance requirements. A unique process blends multiple finished powder colors together. The result is a highly aesthetic and protective coating. These multi-colored powders are available in Epoxy, Hybrid, Urethane and TGIC Polyester chemistries and in a full range of appearances. They are suitable for many end use applications, including, but not limited to casual furniture, shelving, case goods and leisure equipment.

### Metallic Powder Coatings

Are highly aesthetic, protective finishes that are intended for decorative metal finishing applications. These multi-colored powders can be applied with single application and be top-coated with clear powder for added finish performance. These coatings are formulated and manufactured to meet all customer appearance and performance requirements. Available in both blended and bonded formulations.



Midnight Black  
Wrinkle  
FBT2-C0002

## Patio Furniture



Chrome-Bonded  
PAF8-C0008 ●



Carbon 96-Bonded ★  
PBF8-C0001



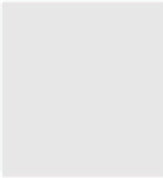








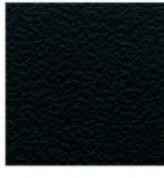
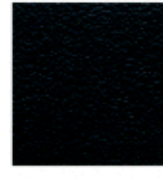


Bronze Age II  
PDV8-C0001



Weather Green  
UGB4-C0001



Standard • Hybrid

						
Strobe White HWS8-C0045	Antique White HWS6-C7786	Smooth Gray HAS8-C2858	Stone HAS4-C0000	Nitro Blue Text HLT2-C0006	Char Gray Text HAT2-C0111	Gloss Black HBS8-C2299
						
Box Black HBS4-C0003	Semi-Gloss Black HBS4-C2132	Blackjack HBT2-C0008	Phantom Black HBT4-C0002	Low Gloss Texture HBT2-C2621	Satin Black HBS2-C2932	

PLEASE NOTE:  
For Epoxy & Hybrid  
qualities exterior  
applications are not  
recommended.

When the mechanical film properties of an epoxy and the overbake stability of polyesters are needed, POWDURA® Hybrid powders are the perfect choice. These finishes display exceptional transfer efficiency, permitting more powder to penetrate recesses, corners, and multidimensional substrates. Available in thin-film finishes, POWDURA® Hybrid coatings are commonly specified for finishing office furniture, automotive components, shelving, and exercise equipment.

Standard • Polyester

						
Rocket White PWS8-C0025	Coastal White PWS6-C0018	Gloss White PWS8-C0016	Tech White PWS8-C0013	Whitewater PWS8-C0026	Pure White PWS8-C7479	White Powder PWS8-C0002
						
Almond PHS4-C0026	Regal Red PRS8-C0008	International Red PRS8-C0015	Bittersweet PES8-C0004	Gloss Orange PES8-C6849	Safety Orange PES8-C6148	Safety Yellow PYS8-C0007
						
NL Yellow PYS8-C8289	Campus Green PGS8-C0016	Vista Green PGS6-C0016	Fence Green PGS8-C0651	Capitol Blue PLS8-C0019	Blue Ribbon PLS8-C0002	Mirror Black PBS8-C2819
						
Ansi 70 Gray PAS8-C0003	61 Gray PAS4-C2395	49 Gray PAS6-C0001	Frame Gray PAS4-C0045	Black PBS4-C0009	Gloss Black PBS8-C0000	
						
Satin Black FBS4-C2634 TGIC-Free	Low Gloss Black PBS4-C0010	Raven Texture I PBT2-C0001	Raven Texture II PBT6-C0001	Semi-Gloss Black FBS6-C2476 TGIC-Free		

## Metal Building Products



Slate Blue  
PLS4-C0001



Medium Bronze  
PNS4-C0002



Sandstone  
PHS4-C0027



Light Gray  
PAS4-C0002



Charcoal  
PAS4-C0001



Bone White  
PWS4-C0001



Western Tan  
PHS6-C0021



Architectural  
Bronze  
PDS4-C0014



Legal Blue  
PLS4-C0002



Forest Green  
PGS4-C0001



Surrey Beige  
PHS4-C0028



Royal Brown  
PNS4-C0001



Barn Red  
PRS4-C0001



Burgundy  
PRS4-C0003

These  
formulations,

Available in both TGIC and TGIC-Free formulas, POWDURA® Polyester coatings form attractive finishes that leave lasting impressions. Excellent color and gloss retention, good overbake stability, and superior mechanical properties make these versatile finishes the right choice for a wide range of applications, including electronic cabinetry, case goods, transformer housings, and furniture.

## Steel Shelving



HD Beige  
HHS6-C0001



Oyster White  
HWS8-C0046



Ultra Orange  
PES8-C0006



Rack Green  
PGS8-C0653



Shelf Gray  
HAS4-C0003



Clay  
PHS4-C0029



Almond  
PHS4-C0030

Sherwin-Williams offers the most complete line of advanced, performance-proven, coating systems to improve throughput, insure consistency and comply with EPA regulations.



## Metal Furniture



Warm White  
HHS4-C0038



Tan  
HHS4-C0036



Muslin  
HWS4-C0004



Parchment  
HHS4-C0035



Driftwood  
HHS4-C0037



Tungsten-Bonded  
HAF4-C0001



Steel-Bonded  
HAF4-C0003



Gold Dust-Bonded  
HNF4-C0001



Sand Texture  
HHT2-C0001



Cloud  
HAS4-C0001



Platinum-Bonded  
HAF4-C0002



Slate Texture  
HAT2-C0113



Mist  
HAS4-C0005



Flint  
HAS4-C0002

## Electronic Enclosures



Gloss White  
UWS8-C0016



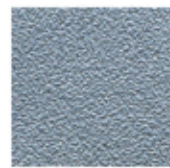
Sky White  
UWS8-C0017



White Texture  
PWT6-C0002



Deep Blue Texture  
HLT2-C0007



Nickel Metallic  
Texture-Bonded  
HAF2-C0001



Iron Gray Texture  
HBT2-C0009



Dark Gray Texture  
HAT2-C0112



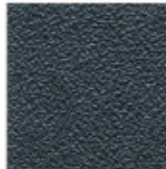
Slate Gray  
PAT2-C0006



Charcoal Metallic Texture  
HAF2-C0002



300 Gray  
UAS4-C0002



Graphite Metallic Texture  
HAF2-C0003



Gibraltar Gray  
PAT2-C0007

OEM specified and approved finishes are available. Please contact your Sherwin-Williams Representative for details.



Our combination of quality products and services makes us the coatings provider of choice for electronics enclosure manufacturers. We have the products OEM's, plastic molders and metal fabricators know. Ones that protect, endure, enhance, impact and brand your products as the very best.

### Breadth of Products, Names You Trust

Sherwin-Williams offers the most complete line of advanced, performance-proven, coating systems to improve throughput, insure consistency and comply with EPA regulations.

## Functional



Gray Primer  
EAS6-C0000



Primer Topcoat  
UBS2-C0002



Postal Blue  
PLS8-C0004



Seafoam Green  
(Mil-P-53022/  
Mil-PRF-22750)  
EGS2-90007



Beach Sand  
(Mil-PRF-24712A)  
22563  
EHS6-30003



Pastel Green  
(Mil-PRF-24712A)  
24585  
EGS6-30001



Pastel Blue  
(Mil-PRF-24712A)  
25526  
EAS4-30009



### Clear Coats:

PCS8-C0009 - Full Gloss  
PCS6-C0002 - Semi-Gloss (50°-70°)  
PCS4-C0002 - Low Gloss (30°-50°)

For stand alone use or as topcoat for exterior grade Polyester or Urethane chemistries.

There are Sherwin-Williams finishing systems for a complete range of substrates including metal and plastic. Typical military applications for our coatings include:

- Tactical Ground Equipment
- Military Aerospace
- Military Ground Support Equipment
- Weapons and Ammunition
- Containers
- Shelters





Standard • Urethane

Furniture White UWS8-C0002

Chalk UWS8-C0015

Unicream UHS8-C0000

Regal Yellow UYS8-C0010

Tractor Green UGS8-C0001

Electric Blue ULS8-C0003

61 Gray UAS4-C0001

Machine Tool Gray UAS8-C0009

Matte Black UBS2-C0001

High Gloss Black UBS8-C0000

Flat Black UBS2-C0007

POWDURA® Polyester Urethanes deliver a high definition finish with excellent weatherability and resistance to environmental exposure. Recommended for products used in interior or exterior environments, they provide long-term stability, and are available in anti-gassing and E-Cap Free formulas. For applications such as furniture, electronic cabinetry, and automotive components, POWDURA® provides superior protection against prolonged weathering.

Standard • Epoxy

Safety Blue ELS8-C0002

Iron Gate EBS2-C0000

Coal EBS8-C0000

Carbide Black EBT2-C0000

Ebony EBS2-C0002

Satin Black EBS2-C2782

PLEASE NOTE: For Epoxy & Hybrid qualities exterior applications are not recommended.

For a finish with optimum film properties, POWDURA® Epoxies are the answer. Hard, impact resistant and solvent resistant, these coatings provide long-term protection to products designed for interior service environments. Applicators also benefit from flexible cure schedules, and the availability of these epoxies in both standard and low-cure formulations. Typical applications include industrial equipments, automotive underbody components, furniture, and appliances.

Specific Gravity Chart

Specific Gravity - ratio of the weight of a given volume of liquid or solid to the weight of an equal volume of water. (ASTM Test D3451)

Typical Powder Costs:  
Per square foot at 1.0mil (.001) film thickness. (Read across to closest specific gravity, and down to nearest cost. Multiply indicated cost by total film thickness. e.g., for a powder with a specific gravity of 1.6 and price of \$2.50/# applied at 2.5 mil cured film thickness, cost is determined by \$0.021 x 2.5 mils = \$0.0525 per square foot.)

		TYPICAL SPECIFIC GRAVITIES												
		1.0	1.1	1.2	1.3	1.4	1.5	1.6	1.7	1.8	1.9	2.0	2.5	3.0
TYPICAL UNIT PRICE (PER #)	1.50	.0080	.0090	.0094	.0101	.0110	.0180	.0124	.0132	.0140	.0150	.0160	.0201	.0234
	1.75	.0091	.0100	.0110	.0190	.0180	.0140	.0150	.0154	.0163	.0172	.0181	.0280	.0273
	2.00	.0104	.0160	.0130	.0140	.0150	.0160	.0170	.0180	.0190	.0200	.0210	.0260	.0312
	2.10	.0109	.0120	.0131	.0141	.0152	.0163	.0174	.0190	.0200	.0210	.0220	.0273	.0330
	2.20	.0114	.0130	.0140	.0150	.0160	.0171	.0182	.0194	.0210	.0220	.0230	.0290	.0343
	2.30	.0120	.0132	.0144	.0160	.0180	.0180	.0191	.0203	.0214	.0230	.0240	.0299	.0360
	2.40	.0130	.0140	.0150	.0162	.0174	.0190	.0200	.0213	.0224	.0240	.0250	.0312	.0374
	2.50	.0130	.0143	.0160	.0170	.0181	.0194	.0210	.0220	.0233	.0250	.0260	.0330	.0390
	2.75	.0143	.0160	.0172	.0190	.0200	.0214	.0230	.0242	.0260	.0270	.0290	.0360	.0430
	3.00	.0160	.0172	.0190	.0202	.0220	.0233	.0250	.0264	.0280	.0200	.0311	.0390	.0470
	3.50	.0182	.0200	.0220	.0240	.0254	.0272	.0290	.0308	.0330	.0344	.0362	.0460	.0550
	4.00	.0208	.0230	.0250	.0270	.0290	.0311	.0331	.0352	.0373	.0393	.0414	.0520	.0623
5.00	.0260	.0290	.0312	.0340	.0362	.0390	.0414	.0440	.0470	.0492	.0520	.0650	.0780	





Grotto  
HAS4-C0004



Sterling-Bonded  
HAF4-C0005



Champagne Metallic-  
Bonded  
HHF2-C0004



Silver-Bonded  
HAF2-C0005



Silver Pearl-  
Bonded  
HAF4-C0004



Storm Gray-  
Bonded  
HAF2-C0004

Excellent resistance to weathering and ultraviolet light environments, the coatings display good color and gloss. For products such as lawn/garden equipment, outdoor furniture, and more, Sherwin-Williams® Urethanes provide the extra needed durability.

OEM specified and approved finishes are available. Please contact your Sherwin-Williams Representative for details.



### Heavy Equipment



Equipment Blue  
PLS8-C0020



Dull Black  
UBS2-C0009



Equipment Tan  
PHS8-C0022



Equipment Yellow  
PYS8-C0008



Brite Red  
PRS8-C0120



Red Letter  
PRS8-C0063



Power Orange  
PES8-C0005



All Gray  
PAS8-C0019



Industrial Charcoal  
PAS8-C0018



Dark Gray  
PAS8-C0017



Enviro Green  
PGS8-C0652



Jet Black  
FBS4-C0001



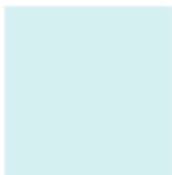
Medium Gloss  
Black  
PBS6-C0001

Our combination of quality products and services makes us the coatings provider of choice for manufacturers of agricultural, construction and industrial equipment. We have the products you know. Ones that protect, endure, enhance, impact and brand your products as the very best.



These products represented in this color card have been prepared as replications of actual coated stock. However, chips may vary slightly in color and gloss from actual coatings due to the effects of heat, light, and the manufacturing process.

### Wheel Rim



Starburst White  
PWS8-C0028



Wheel White  
PWS8-C0027



Wheel Gray  
PAS8-C0016



New Rim Grey  
PAS8-C0020



Overnight Grey  
PAS8-C0021



Wheel Black  
PBS8-C0001



When it comes to getting great value,  
no one can top The Sherwin-Williams Company.

MORE SERVICE •



• MORE SOLUTIONS



With Sherwin-Williams as your powder coatings supplier, product and service support is an important part of the relationship:

- Powdura® Powder Coatings are performance-tested and manufactured to satisfy the most demanding project requirements.
- A distribution network that is second to none, even the most demanding supply chain requirements can be met.
- Solutions-driven sales and technical support
- Engineering and design services that will work with you to insure that your production line runs at peak efficiency
- Color and design support services that insure up to date and consistent color whether you are using liquid or powder coatings

For more information on how to put our expertise to work for your business, contact your Sherwin-Williams Chemical Coatings Sales Representative. Information on these services is also available via the World Wide Web at

[www.sherwin-williams.com/oem](http://www.sherwin-williams.com/oem) or by calling 1-800-524-5979.



## POWDURA® POWDER COATINGS

For a Better Finish. Ask Sherwin-Williams.™

For more information call  
1-800-524-5979

[www.sherwin-williams.com/oem](http://www.sherwin-williams.com/oem)

